

MACHINE BOLTS

PLEASE SPECIFY SQUARE OR HEX



HOT DIP GALVANIZED -ROLLED THREADS

Victory Bolt & Specialty's Machine Bolts are manufactured in accordance with ANSI C135.1 using SAE C1018 cold drawn or ASTM A36 steel. The machine bolts are galvanized in accordance with ASTM A153. Each bolt is shipped with an assembled nut.

5/8" DIAMETER

12400 LB TENSILE STRENGTH

<u>VICTORY P/N SQUARE HD</u>	<u>VICTORY P/N HEX HD</u>	<u>HUGHES P/N SQUARE</u>	<u>HUGHES P/N HEX</u>	<u>BOLT LENGTH</u>	<u>THREAD LENGTH</u>	<u>STD.PKG.</u>	<u>WT. 100 PCS</u>
58115 SQMB/NUT	58115 HHMB/NUT	B65-1-1/2	HB65-1-1/2	5"	3"	100	60 LBS
58116 SQMB/NUT	58116 HHMB/NUT	B66-1-1/2	HB66-1-1/2	6"	3"	100	68 LBS
581116 SQMB/NUT	581116 HHMB/NUT	B616-6	HB616-6	16"	6"	50	151 LBS
581118 SQMB/NUT	581118 HHMB/NUT	B618-6	HB618-6	18"	6"	50	167 LBS
581120 SQMB/NUT	581120 HHMB/NUT	B620-6	HB620-6	20"	6"	40	184 LBS

3/4" DIAMETER

18350 LB TENSILE STRENGTH

<u>VICTORY P/N SQUARE HD</u>	<u>VICTORY P/N HEX HD</u>	<u>HUGHES P/N SQUARE</u>	<u>HUGHES P/N HEX</u>	<u>BOLT LENGTH</u>	<u>THREAD LENGTH</u>	<u>STD.PKG.</u>	<u>WT. 100 PCS</u>
34108 SQMB/NUT	34108 HHMB/NUT	B78-4	HB78-4	8"	4"	50	127 LBS
341010 SQMB/NUT	341010 HHMB/NUT	B710-4	HB710-4	10"	6"	50	151 LBS
341012 SQMB/NUT	341012 HHMB/NUT	B712-6	HB712-6	12"	6"	25	175 LBS
341014 SQMB/NUT	341014 HHMB/NUT	B714-6	HB714-6	14"	6"	25	198 LBS
341016 SQMB/NUT	341016 HHMB/NUT	B716-6	HB716-6	16"	6"	25	222 LBS
341018 SQMB/NUT	341018 HHMB/NUT	B718-6	HB718-6	18"	6"	25	246 LBS
341020 SQMB/NUT	341020 HHMB/NUT	B720-6	HB720-6	20"	6"	25	270 LBS
341022 SQMB/NUT	341022 HHMB/NUT	B722-6	HB722-6	22"	6"	25	293 LBS
341024 SQMB/NUT	341024 HHMB/NUT	B724-6	HB724-6	24"	6"	25	317 LBS

7/8 DIAMETER

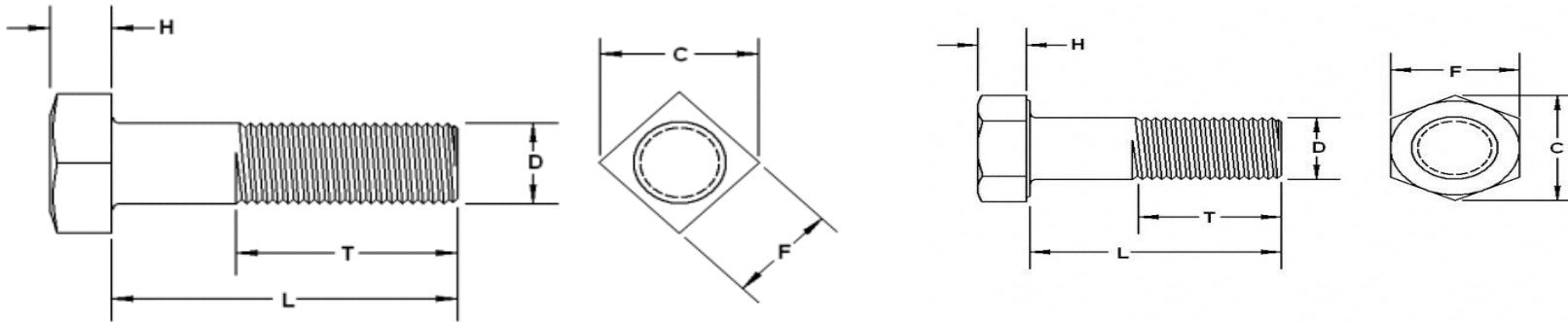
25400 LB TENSILE STRENGTH

<u>VICTORY P/N SQUARE HD</u>	<u>VICTORY P/N HEX HD</u>	<u>HUGHES BROS P/N</u>	<u>HUGHES P/N HEX</u>	<u>BOLT LENGTH</u>	<u>THREAD LENGTH</u>	<u>STD.PKG.</u>	<u>WT. 100 PCS</u>
7893 SQMB/NUT	7893 HHMB/NUT	B83-2	HB83-2	3"	2"	50	83 LBS
7894 SQMB/NUT	7894 HHMB/NUT	B84-2	HB84-2	4"	2"	50	115 LBS
7896 SQMB/NUT	7896 HHMB/NUT	B86-2-1/2	HB86-2-1/2	6"	3"	40	147 LBS
78910 SQMB/NUT	78910 HHMB/NUT	B810-6	HB810-6	10"	4"	25	212 LBS
78912 SQMB/NUT	78912 HHMB/NUT	B812-6	HB812-6	12"	6"	25	244 LBS
78914 SQMB/NUT	78914 HHMB/NUT	B814-6	HB814-6	14"	6"	20	277 LBS
78916 SQMB/NUT	78916 HHMB/NUT	B816-6	HB816-6	16"	6"	15	309 LBS
78918 SQMB/NUT	78918 HHMB/NUT	B818-6	HB818-6	18"	6"	15	341 LBS
78920 SQMB/NUT	78920 HHMB/NUT	B820-6	HB820-6	20"	6"	15	373 LBS

(1/2" - 1 1/2" Diameter's Available)



MACHINE BOLT -HEAD DIMENSIONS & STRENGTH SPECIFICATIONS



AVAILABLE IN GRADE 2 & GRADE 5

STANDARD BOLT DIAMETER	F-BASIC WIDTH ACROSS FLATS SQUARE	H-BASIC HEAD HEIGHT SQUARE	H-BASIC HEAD HEIGHT HEX	GR.2 TENSILE STRENGTH 1/4"-3/4" -74,000 P.S.I. 3/4"-1-1/2" -60,000 P.S.I. GR.5 TENSILE STRENGTH 1/4"-1" =120,000 P.S.I. 1"-1-1/2" =105,000 P.S.I.
1/2"	3/4"	21/64"	11/32"	
5/8"	15/16"	27/64"	27/64"	
3/4"	1-1/8"	1/2"	1/2"	
7/8"	1-5/16"	19/32"	37/67"	
1"	1-1/2"	21/32"	43/64"	
1-1/8"	1-11/16"	3/4"	3/4"	
1-1/4"	1-7/8"	27/32"	27/32"	
1-1/2"	2-1/4"	1"	1"	

all machine bolts are also available in
SS AND ZINC PLATED



HI-STRENGTH A449/A325 BOLTS

AVAILABLE IN H.D.G. OR PLAIN FINISH

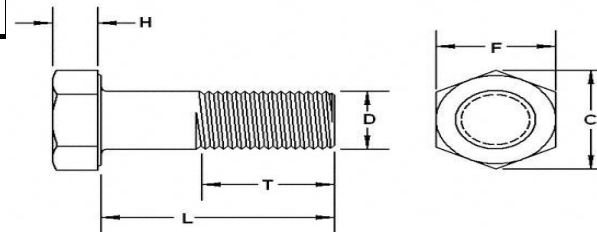


VICTORY BOLT & SPECIALTY'S

HIGH STRENGTH BOLTS ARE
MANUFACTURED IN ACCORDANCE
WITH ASTM A449/ ASTM A325
SPECIFICATIONS.

<u>VICTORY PART NUMBER</u> <u>PLAIN</u>	<u>VICTORY PART NUMBER</u> <u>H.D.G.</u>	<u>BOLT SIZE</u>	<u>STD.PKG.</u>	<u>WT. 100 PCS</u>
12132 A325	12132 A325 HDG	1/2 X 2	250	23 LBS
12133 A325	12133 A325 HDG	1/2 X 3	250	28 LBS
12134 A449	12134 A449 HDG	1/2 X 4	100	33 LBS
12136 A449	12136 A449 HDG	1/2 X 6	100	44 LBS
58112 A325	58112 A325 HDG	5/8 X 2	100	35 LBS
58113 A325	58113 A325 HDG	5/8 X 3	100	44 LBS
58114 A325	58114 A325 HDG	5/8 X 4	100	52 LBS
58116 A325	58116 A325 HDG	5/8 X 6	50	68 LBS
58118 A449	58118 A449 HDG	5/8 X 8	50	85 LBS
581110 A449	581110 A449 HDG	5/8 X 10	50	101 LBS
581112 A449	581112 A449 HDG	5/8 X 12	40	118 LBS
34103 A325	34103 A325 HDG	3/4 X 3	100	68 LBS
34104 A325	34104 A325 HDG	3/4 X 4	50	80 LBS
34105 A325	34105 A325 HDG	3/4 X 5	50	91 LBS
34106 A449	34106 A449 HDG	3/4 X 6	50	103 LBS
34108 A449	34108 A449 HDG	3/4 X 8	40	127 LBS
341010 A449	341010 A449 HDG	3/4 X 10	30	151 LBS
341012 A449	341012 A449 HDG	3/4 X 12	30	175 LBS

STANDARD BOLT DIAMETER	F-BASIC WIDTH ACROSS FLATS	H-BASIC HEAD HEIGHT
1/2"	7/8"	5/16"
5/8"	1-1/16"	25/64"
3/4"	1-1/4"	15/32"
7/8"	1-7/16"	35/64"
1"	1-5/8"	39/64"
1-1/4"	2"	25/32"



MANY LONGER LENGTHS AND DIAMETERS AVAILABLE



**VICTORY BOLT
AND SPECIALTY**

DOUBLE ARMING BOLTS

HOT DIP GALVANIZED -ROLLED THREADS



ALSO AVAILABLE IN DOUBLE END STYLE
FULL THREAD STUDS MAY BE PURCHASED WITHOUT
ASSEMBLED NUTS

5/8" DIAMETER

12400 LB TENSILE STRENGTH

<u>VICTORY P/N</u>	<u>HUGHES BROS P/N</u>	<u>BOLT LENGTH</u>	<u>STD.PKG.</u>	<u>WT. 100 PCS</u>
581110 DA HDG	N/A	10"	50	111 LBS
581112 DA HDG	TR612-F	12"	50	125 LBS
581114 DA HDG	TR614-F	14"	50	139 LBS
581116 DA HDG	TR616-F	16"	25	154 LBS
581118 DA HDG	N/A	18"	25	168 LBS
581120 DA HDG	TR620-F	20"	25	182 LBS
581122 DA HDG	TR622-F	22"	25	196 LBS
581124 DA HDG	TR624-F	24"	25	211 LBS

3/4" DIAMETER

18350 LB TENSILE STRENGTH.

341012 DA HDG	TR712-F	12"	25	180 LBS
341014 DA HDG	TR714-F	14"	25	205 LBS
341016 DA HDG	TR716-F	16"	25	221 LBS
341018 DA HDG	TR718-F	18"	25	242 LBS
341020 DA HDG	TR720-F	20"	25	262 LBS
341022 DA HDG	TR722-F	22"	25	283 LBS
341024 DA HDG	TR724-F	24"	25	304 LBS
341026 DA HDG	TR726-F	26"	25	325 LBS

7/8 DIAMETER

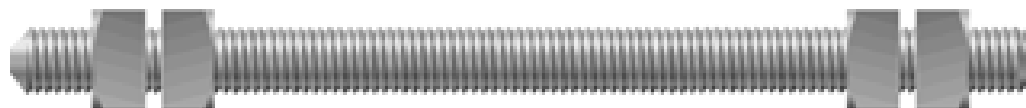
25400 LB TENSILE STRENGTH

78912 DA HDG	TR812-F	12"	25	262 LBS
78914 DA HDG	TR814-F	14"	25	291 LBS
78916 DA HDG	TR816-F	16"	25	320 LBS
78918 DA HDG	TR818-F	18"	25	349 LBS
78920 DA HDG	TR820-F	20"	25	378 LBS
78922 DA HDG	TR822-F	22"	25	406 LBS
78924 DA HDG	TR824-F	24"	25	435 LBS
78926 DA HDG	TR826-F	26"	25	464 LBS

ADDITIONAL SIZES AVAILABLE ON REQUEST

DOUBLE ARMING BOLTS ARE SUPPLIED WITH 4 ASSEMBLED SQUARE NUTS

DOUBLE END BOLTS ARE SUPPLIED WITH 2 ASSEMBLED SQUARE NUTS



LAG SCREWS

HOT DIP GALVANIZED



AVAILABLE IN HEX OR SQUARE HEAD

<u>VICTORY P/N</u>	<u>HUGHES BROS P/N</u>	<u>BOLT SIZE</u>	<u>STD.PKG.</u>	<u>WT. 100 PCS</u>
14114 HLS HDG	LS21-1/4	1/4 X 1 1/4	1000	2 LBS
14212 HLS HDG	LS22-1/2	1/4 X 2 1/2	1000	4 LBS
5162 HLS HDG	LS5/16-2	5/16 X 2	1000	4 LBS
38212 HLS HDG	LS32-1/2	3/8 X 2 1/2	500	8 LBS
383 HLS HDG	LS33	3/8 X 3	500	8 LBS
384 HLS HDG	LS34	3/8 X 4	500	10 LBS
386 HLS HDG	LS36	3/8 X 6	250	15 LBS
122 HLS HDG	LS52	1/2 X 2	500	11 LBS
123 HLS HDG	LS53	1/2 X 3	250	15 LBS
12312 HLS HDG	LS53-1/2	1/2 X 3 1/2	250	20 LBS
124 HLS HDG	LS54	1/2 X 4	250	20 LBS
125 HLS HDG	LS55	1/2 X 5	250	25 LBS
126 HLS HDG	LS56	1/2 X 6	200	29 LBS
127 HLS HDG	LS57	1/2 X 7	150	40 LBS
584 HLS HDG	LS64	5/8 X 4	150	32 LBS
58412 HLS HDG	LS64-1/2	5/8 X 4 1/2	150	35 LBS
585 HLS HDG	LS65	5/8 X 5	150	40 LBS

SPECIAL LAG SCREWS

<u>VICTORY PN</u>	<u>DESCRIPTION</u>
142 HLS HDG	1/4X2 HEX WASHER HEAD W/ NEOPRENE WASHER AND DRIVE POINT GALV.
383 FD LAG GALV	3/8X3 HEX WASHER HEAD FETTER DRIVE PILOT POINT GALV
124 SQ FETTER	1/2X4 SQUARE HEAD FETTER DRIVE PILOT POINT GALV
124 HWH GALV	1/2X4 HEX WASHER HEAD FETTER DRIVE PILOT PT GALV



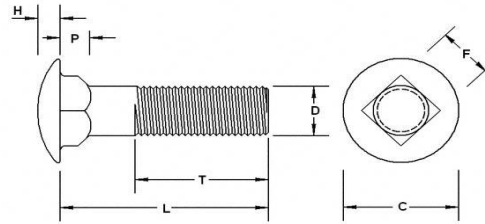
GIMLET POINT REGULAR POINT FETTER DRIVE POINT FETTER DRIVE POINT TWIST DRIVE POINT

HEX HEAD WITH NEOPRENE WASHER AND DRIVE POINT



CARRIAGE BOLTS

HOT DIP GALVANIZED, PLAIN & ZINC PLATED
AVAILABLE IN GRADE 2 & GRADE 5



D=BOLT DIAMETER	C= MAX.HD DIAMETER	F= MAX. SQUARE WIDTH
3/8"	0.844	0.388
1/2"	1.09	0.515
5/8"	1.344	0.642
3/4"	1.594	0.768
1"	2.094	1.022

<u>VICTORY PART NUMBER</u> <u>PLAIN</u>	<u>VICTORY PART NUMBER</u> <u>H.D.G.</u>	<u>BOLT SIZE</u>	<u>STD.PKG.</u>	<u>WT. 100 PCS</u>
1420114 CB	1420114 CB HDG	1/4 X 1 1/4	1000	2 LBS
1420212 CB	1420212 CB HDG	1/4 X 2 1/2	1000	3.26 LBS
516182 CB	516182 CB HDG	5/16 X 2	1000	4.52 LBS
3816212 CB	3816212 CB HDG	3/8 X 2 1/2	500	8.25 LBS
38163 CB	38163 CB HDG	3/8 X 3	500	9.39 LBS
38164 CB	38164 CB HDG	3/8 X 4	500	11.8 LBS
38166 CB	38166 CB HDG	3/8 X 6	250	16.64 LBS
12132 CB	12132 CB HDG	1/2 X 2	500	13.2 LBS
12133 CB	12133 CB HDG	1/2 X 3	250	17.98 LBS
1213312 CB	1213312 CB HDG	1/2 X 3 1/2	250	19.74 LBS
12134 CB	12134 CB HDG	1/2 X 4	250	21.9 LBS
12135 CB	12135 CB HDG	1/2 X 5	250	26.3 LBS
12136 CB	12136 CB HDG	1/2 X 6	200	31.4 LBS
12137 CB	12137 CB HDG	1/2 X 7	150	41.5 LBS
58114 CB	58114 CB HDG	5/8 X 4	150	35.9 LBS
581412 CB	5811412 CB HDG	5/8 X 4 1/2	150	40.4 LBS
58115 CB	58115 CB HDG	5/8 X 5	150	42.31 LBS
58116 CB	58116 CB HDG	5/8 X 6	100	50.71 LBS
58118 CB	58118 CB HDG	5/8 X 8	75	71.60 LBS
581110 CB	581110 CB HDG	5/8 X 10	60	88.40 LBS

WHEN REQUESTING A ZINC ITEM, SIMPLY PUT A "Z" AT THE END OF NUMBER

MANY LONGER LENGTHS AND DIAMETERS AVAILABLE
STAINLESS STEEL ALSO AVAILABLE

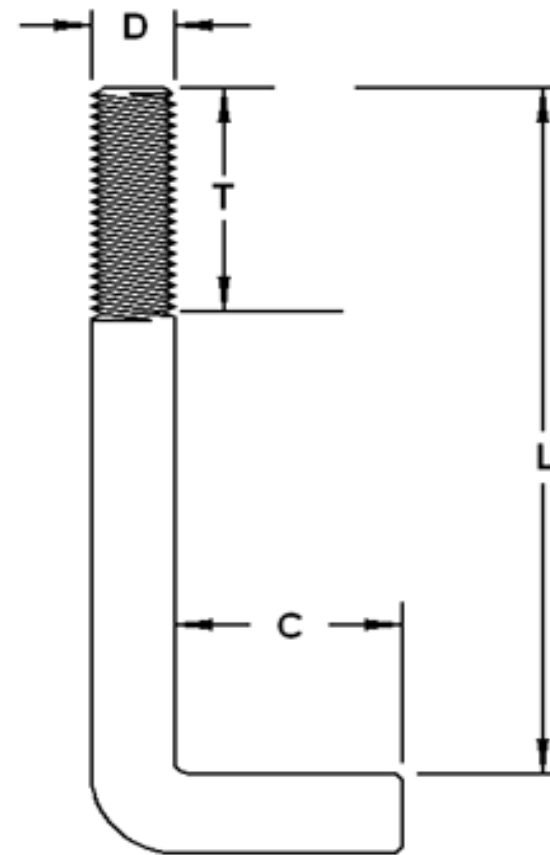


ANCHOR BOLTS

HOT DIP GAVANIZED & PLAIN

ALL DIMENSIONS
CAN BE ALTERED
TO MEET OUR
CUSTOMERS
SPECIFICATIONS

Anchor Bolt Size (D x L x C x T)	Plain Finish	Hot Dip Galv.
1/2 x 8 x 2 x 4	•	•
1/2 x 10 x 2 x 4	•	•
1/2 x 12 x 2 x 4	•	•
1/2 x 18 x 4 x 4	•	•
5/8 x 8 x 2 x 4	•	•
5/8 x 10 x 2 x 4	•	•
5/8 x 12 x 3 x 4	•	•
5/8 x 18 x 3 x 4	•	•
3/4 x 6 x 3 x 4	•	•
3/4 x 8 x 3 x 4	•	•
3/4 x 10 x 3 x 4	•	•
3/4 x 12 x 3 x 4	•	•
3/4 x 14 x 4 x 6	•	•
3/4 x 15 x 4 x 6	•	•
3/4 x 16 x 4 x 6	•	•
3/4 x 18 x 4 x 6	•	•
3/4 x 20 x 4 x 6	•	•
3/4 x 22 x 4 x 6	•	•
3/4 x 24 x 4 x 6	•	•
3/4 x 30 x 4 x 6	•	•
3/4 x 30 x 4 x 7	•	•
7/8 x 10 x 3 x 4	•	•
7/8 x 12 x 3 x 4	•	•
7/8 x 18 x 4 x 6	•	•
1 x 12 x 4 x 4	•	•
1 x 16 x 4 x 6	•	•
1 x 18 x 4 x 6	•	•
1 x 24 x 4 x 4	•	•
1 x 36 x 4 x 6	•	•
1 x 36 x 4 x 7	•	•
1-1/4 x 32 x 6 x 7	•	•
1-1/4 x 36 x 5 x 6	•	•
1-1/4 x 42 x 6 x 7	•	•

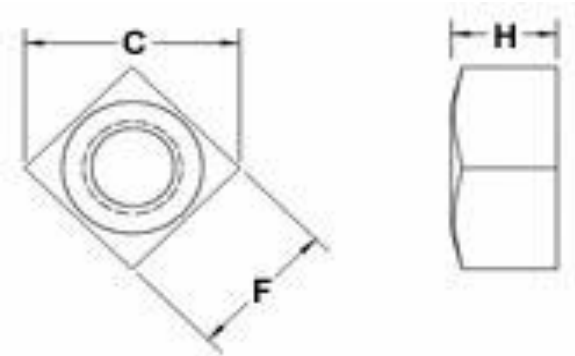


Dimensions
D x L x C x T

ADDITIONAL SIZES AVAILABLE ON REQUEST
SPECIALS MADE TO ORDER
SPECIFY DIMENSIONS
 ALSO AVAILABLE WITH WELDED PLATE WASHERS



SQUARE NUTS



HOT DIP GALVANIZED

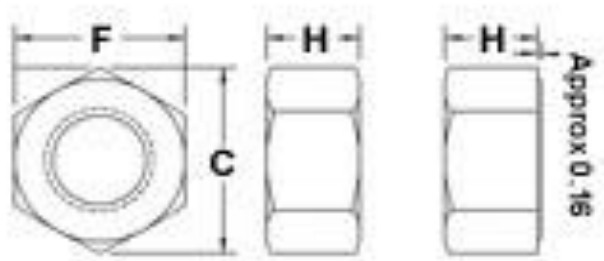
<u>VICTORY P/N</u>	NOMINAL SIZE	F-BASIC WIDTH ACROSS FLATS	C-WIDTH ACROSS CORNERS	H-THICKNESS
			MAX/MIN	
3816 SQ NUT HDG	3/8"	5/8"	.884/.802	21/64"
1213 SQ NUT HDG	1/2"	13/16"	1.149/1.052	7/16"
5811 SQ NUT HDG	5/8"	1"	1.414/1.300	35/64"
3410 SQ NUT HDG	3/4"	1- 1/8"	1.591/1.464	21/32"
789 SQ NUT HDG	7/8"	1-5/16"	1.856/1.712	49/64"
18 SQ NUT HDG	1"	1-1/2"	2.121/1.961	7/8"
1187 SQ NUT HDG	1-1/8"	1-11/16"	2.386/2.209	1"
1147 SQ NUT HDG	1-1/4"	1-7/8"	2.652/2.458	1-3/32"
1126 SQ NUT HDG	1-1/2"	2-1/4 "	3.182/2.956	1-5/16"

SQUARE/HEX NUTS ARE COMMONLY USED WITH POLE LINE HARDWARE. SINCE HOT DIP GALVANIZING ADDS APPROXIMATELY 2.2 TO 5 MILS OF THICKNESS THIS PRODUCT IS TAPPED OVERSIZE TO COMPENSATE FOR THIS CORROSION RESISTANT COATING.



HEX NUTS

HOT DIP GALVANIZED



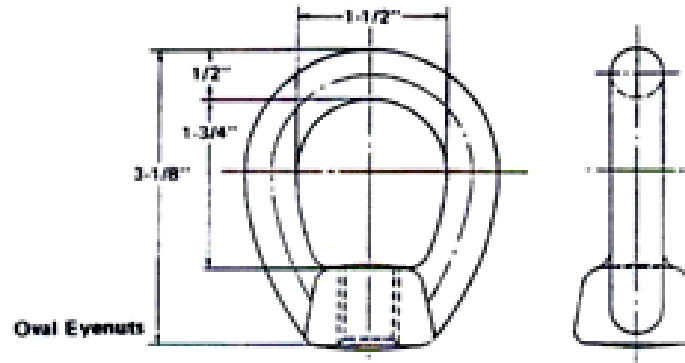
<u>VICTORY P/N</u>	NOMINAL SIZE	F-BASIC WIDTH ACROSS FLATS		C-WIDTH ACROSS CORNERS		H-THICKNESS
				MAX/MIN		
3816 NUT HDG	3/8"	9/16"		.65/.528		21/64"
1213 NUT HDG	1/2"	3/4"		.866/.840		7/16"
5811 NUT HDG	5/8"	15/16"		1.08/1.051		35/64"
3410 NUT HDG	3/4"	1-1/8"		1.299/1.240		41/64"
789 NUT HDG	7/8"	1-5/16"		1.516/1.447		3/4"
18 NUT HDG	1"	1-1/2"		1.732/1.653		55/64"
1187 NUT HDG	1-1/8"	1-11/16"		1.949/1.859		31/32"
1147 NUT HDG	1-1/4"	1-7/8"		2.165/2.066		1-1/16"
1126 NUT HDG	1-1/2"	2-1/4"		2.598/2.480		1-9/32"

**AVAILABLE IN SS
AND ZINC PLATED**



EYE NUTS

FORGED OVAL EYENUTS



HOT DIP GALVANIZED

<u>VICTORY P/N</u>	<u>HUGHES BROS P/N</u>	<u>BOLT DIAMETER</u>	<u>STD.PKG.</u>	<u>WT. 100 PCS</u>
5811 EYENUT	EN60	5/8"	100	63
3410 EYENUT	EN70	3/4"	100	60



VICTORY BOLT & SPECIALTY'S OVAL EYE NUTS
HAVE STRENGTH AND DIMENSIONS PER
ANSI C135.5



WASHERS

STANDARD ROUND FLATWASHERS

IN PLAIN, H.D.G. & ZINC

ALSO AVAILABLE IN SS

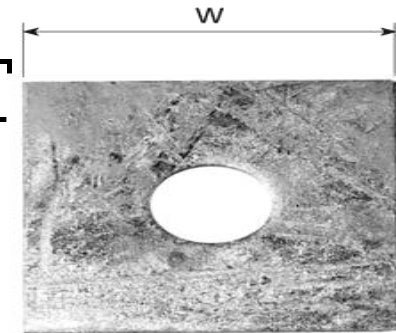


VICTORY P/N	VICTORY P/N HDG	VICTORY P/N ZINC	NOMINAL SIZE
38 FW	38 FW HDG	38 FW Z	3/8"
12 FW	12 FW HDG	12 FW Z	1/2"
58 FW	58 FW HDG	58 FW Z	5/8"
34 FW	34 FW HDG	34 FW Z	3/4"
1 FW	1 FW HDG	1 FW Z	1"
114 FW	114 FW HDG	114 FW Z	1-1/4"
112 FW	112 FW HDG	114 FW Z	1-1/2"

RECTANGLE WASHERS ALSO AVAILABLE***

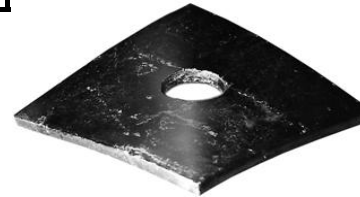
SQUARE WASHERS

VICTORY P/N	WASHER DIMENSIONS	BOLT SIZE
2 SQ FW HDG	2" SQ. X 1/8 THK	1/2"
3 SQ FW HDG	3" SQ. X 1/4 THK	3/4"
4312 RET WASH	4 X 3-1/2 X 3/8 THK	5/8"



SQUARE CURVED WASHERS

VICTORY P/N	WASHER DIMENSIONS	BOLT SIZE
2 CW HDG	2" SQ. X 1/8 THK	1/2"
214 CW HDG	2-1/4 SQ. X 3/16 THK	5/8"
3 CW HDG	3" SQ X 1/4 THK	5/8"
334 CW HDG	3" SQ X 1/4 THK	3/4"



LOCK WASHERS

SPRING LOCK WASHERS

IN PLAIN, H.D.G. & ZINC



VICTORY P/N	VICTORY P/N HDG	ZINC	NOMINAL SIZE
38 LW	38 LW HDG	38 LW Z	3/8"
12 LW	12 LW HDG	12 LW Z	1/2"
58 LW	58 LW HDG	58 LW Z	5/8"
34 LW	34 LW HDG	34 LW Z	3/4"
1 LW	1 LW HDG	1 LW Z	1"
114 LW	114 LW HDG	114 LW Z	1-1/4"
112 LW	112 LW HDG	114 LW Z	1-1/2"

DOUBLE COIL LOCK WASHERS

VICTORY P/N	NOMINAL SIZE
12 DBL COIL	1/2"
58 DBL COIL	5/8"
34 DBL COIL	3/4"

ADDITIONAL SIZES AVAILABLE ON REQUEST



NON-FERROUS BOLTS, NUTS AND WASHERS

PRODUCTS MADE OF COPPER, BRONZE, STAINLESS STEEL & ALUMINUM
HAVE BEEN ADDED TO OUR LINE TO MEET THE EVER CHANGING NEEDS
OF THE ELECTRIC UTILITY INDUSTRY.
BOLTS CAN BE BOXED WITH NUTS IF SPECIFIED

HEX BOLTS

<u>VICTORY P/N STAINLESS</u>	<u>VICTORY P/N SILICONE BRONZE</u>	<u>VICTORY PN ALUMINUM</u>	<u>BOLT SIZE</u>	<u>STD.PKG.</u>
3816112 18-8	3816112 SB	3816112 AL 205	3/8 X 1-1/2	100
12131 18-8	12131 SB	12131 AL 205	1/2 X 1	100
1213112 18-8	1213112 SB	1213112 AL 205	1/2 X 1-1/2	100
12132 18-8	12132 SB	12132 AL 205	1/2 X 2	100
1213212 18-8	1213212 SB	1213212 AL 205	1/2 X 2-1/2	100
12133 18-8	12133 SB	12133 AL 205	1/2 X 3	100
12134 18-8	12134 SB	12134 AL 205	1/2 X 4	100



HEX NUTS

<u>VICTORY P/N STAINLESS</u>	<u>VICTORY P/N SILICONE BRONZE</u>	<u>VICTORY P/N ALUMINUM</u>	<u>NUT SIZE</u>	<u>STD. PKG</u>
1420 NUT 18-8	1420 NUT SB	1420 NUT AL205	1/4"-20	100
3816 NUT 18-8	3816 NUT SB	3816 NUT AL205	3/8"-16	100
1213 NUT 18-8	1213 NUT SB	1213 NUT AL205	1/2"-13	100
5811 NUT 18-8	5811 NUT SB	5811 NUT 205	5/8"-11	100
3410 NUT 18-8	3411 NUT SB	3410 NUT AL205	3/4"-10	100

*AVAILABLE W/O 205



FLATWASHERS

<u>VICTORY P/N STAINLESS</u>	<u>VICTORY P/N SILICONE BRONZE</u>	<u>VICTORY P/N ALUMINUM</u>	<u>NOMINAL SIZE</u>	<u>STD. PKG</u>
14 FW 18-8	14 FW SB	12 FW ALUM	1/4"	100
38 FW 18-8	38 FW SB	38 FW ALUM	3/8"	100
12 FW 18-8	12 FW SB	12 FW ALUM	1/2"	100
58 FW 18-8	58 FW SB	58 FW ALUM	5/8"	100
34 FW 18-8	34 FW SB	34 FW ALUM	3/4"	100

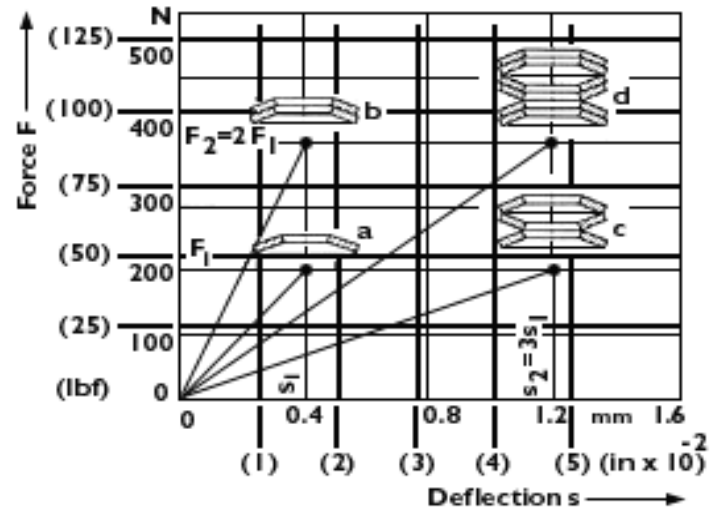
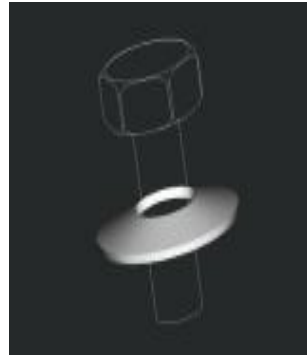


ALUMINUM AVAILABLE WITH AND WITHOUT 205 FINISH

AVAILABLE BOXED IN KITS WITH NUTS, BOLTS AND WASHERS IF DESIRED



VICTORY BOLT & SPECIALTY CARRIES SEVERAL VARIETIES OF BELLEVILLE- DISC SPRING WASHERS IN MANY MATERIALS.



STOCK ITEMS / CUSTOM PRODUCTS AND KITTING...

VICTORY BOLT & SPECIALTY KEEPS MANY OF THE COMMONLY USED LINE HARDWARE PRODUCTS IN STOCK. THIS ENABLES US TO MEET THE OCCASIONAL CRITICAL NEEDS OF OUR CUSTOMERS IN A TIMELY MANNER.

NOT SHOWN IN THIS BROCHURE ARE THE MANY "CUSTOM" ITEMS MADE TO MEET SPECIAL REQUIREMENTS NEEDED. PLEASE CONTACT VICTORY BOLT & SPECIALTY FOR ALL OF YOUR CUSTOM NEEDS.

KITTING SPECIALISTS

NEED NUMEROUS ITEMS ASSEMBLED TOGETHER IN ONE BOX OR BAG?
DO YOU NEED ITEMS THAT NEED TO BE ACCUMULATED FOR A SPECIFIC JOB ON ONE PALLET
AND LABELED WITH WITH YOUR PERTINENT INFORMATION?
SAVE LABOR CALL VICTORY!!!

"Offering you more than just fasteners - building relationships and providing solutions....."

